



The ultimate flooring,
the ultimate performance

Why GRABO sports flooring?

Wide range of products / applications

- Solutions for competition, training and leisure.
- More options for several applications, from kindergarten, through fitness halls, to high competition level sport facilities.
- 2-10 mm thick sport floorings, special coverings and accessories.



Our products are made by technological procedures without using solvents or heavy metals
> less environmental impact.



Due to its special top layer periodical renewal is not necessary. Therefore they can be use continuously, reduced life cycle costs, less chemicals and less energy consumption
> environmentally sound product with reduced maintenance costs.



GraboSAN treatment stops the growth of germs
> reduced risk of contamination in case of injuries.



High energy absorption due to the bottom foam layer
> comfort and protection.
 Optimized deformation shape through the upper foam layer
> easy direction change.



Reduced risk of injury

Optimum vertical deformation

Comfort and protection

Easy change of direction

Coefficient of friction between 0,4-0,7

Optimal balance of grip and slide



Long term protection

Excellent shock absorption

Genuine joint and cartilage protection

Superior for ballsports

Outstanding ball rebound

Imposing sporting performance



Environmental attributes

- 100 % recyclable
- Phtalathe free technology
- No waste products
- Compliant with REACH legislation
- ISO 14001 certified company



Benefits of installation

- Available in rolls
- Less welding
- Light weight products
- Damp proof underlay option



Floor coverings for MULTISPORT HALLS

OUR RECOMMENDATION

MULTISPORT HALLS	MEGA	EXTREME	SUPREME	ELITE
Competition	●	●	●	○
City sport halls	●	●	●	●
Leisure	●	●	●	●

○ -good ● -recommended ● -best solution

BENEFITS

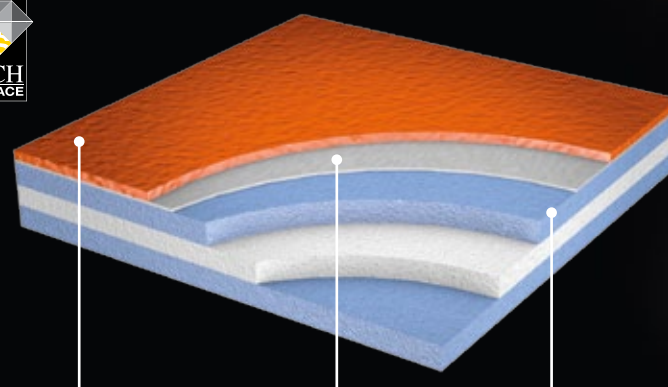
- High shock absorption due to its Combined Foam Backing › **Long term joint and cartilage protection**
- Stable construction and outstanding ball rebound › **Ideal for game ball sports**
- Excellent foam quality, optimal vertical deformation › **Reduced risk of injury**, higher underfoot comfort
- Unique TECH SURFACE wear layer
 - It contains PUR and Al_2O_3
 - **High wear resistance** due to its micronised Al_2O_3 particles
 - PUR provides **easy to clean** properties
 - Coefficient of friction between 0,4-0,7 › **Easy direction change**
 - No periodical polishing required › **Less energy consumption, less maintenance cost**
 - Optimal specular gloss
- Due to its graboSAN treatment › **Stops the growth of germs**
- 2 m wide rolls › **Less welding and joints**



GRABOSPORT MEGA



highly protective **P2** floor
EN 14904



TECH SURFACE
Wear layer

Glass fiber
reinforcement

Combined Foam
Backing



10,0
mm

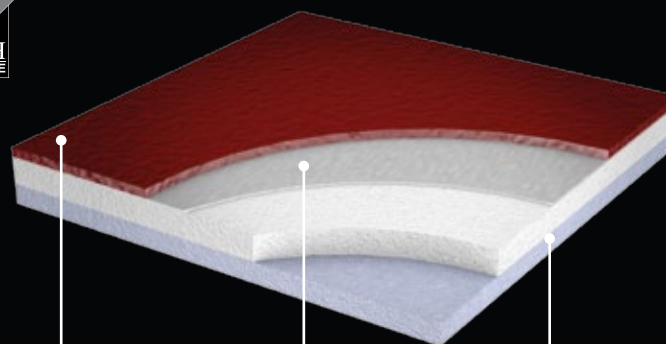
15 years
guarantee

GRABOSPORT

EXTREME / SUPREME / ELITE



highly protective **P1** floors
EN 14904



TECH SURFACE
Wear layer

Glass fiber
reinforcement

Combined Foam
Backing



Elite
6,0
mm

Supreme
6,7
mm

Extreme
8,0
mm

Extreme/ Supreme
15

Elite
10 years
guarantee



Floor coverings for
MULTISPORT HALLS

Colours of
**MEGA / EXTREME
SUPREME / ELITE**



4289 Mega / Extreme
Supreme / Elite



1360 Mega / Extreme
Supreme / Elite



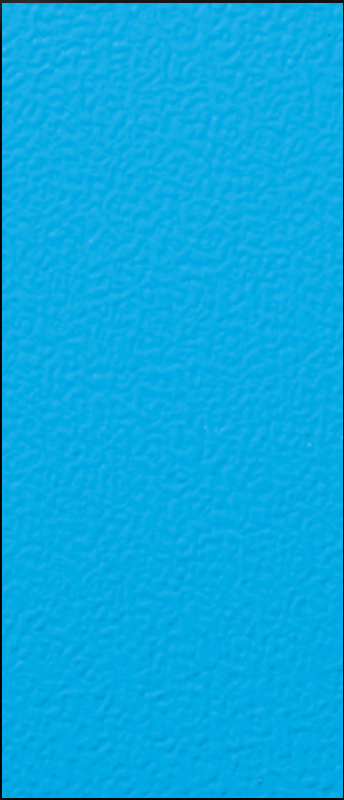
6470 Extreme / Supreme



7143 Extreme / Supreme



6170 Mega / Extreme
Supreme / Elite



6115 Supreme



3096 Mega / Extreme
Supreme / Elite



3338 Mega / Extreme
Supreme / Elite



2089 Supreme



7539 Supreme



7483 Mega / Extreme
Supreme / Elite



2000-378 Extreme / Supreme



2561-378* Extreme / Supreme



3151-378 Mega / Extreme / Supreme / Elite



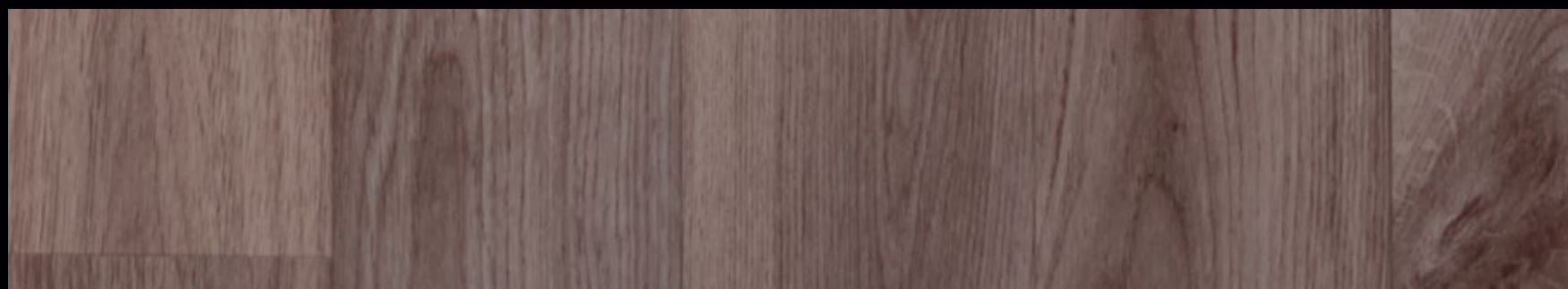
2519-371 Mega / Extreme / Supreme / Elite



2209-371 Extreme / Supreme



2181-371 Supreme



1171-371 Supreme

*min. order 1000m²



Floor coverings for FITNESS HALLS

OUR RECOMMENDATION

FITNESS TYPE	SUPREME	ELITE	PRIMA	GYMFIT 60	GYMFIT 50	START	STAMINA
Gymnastic / Aerobic	●	●	●	●	●	○	
Cardio training				○	●	○	●
Strength training							●

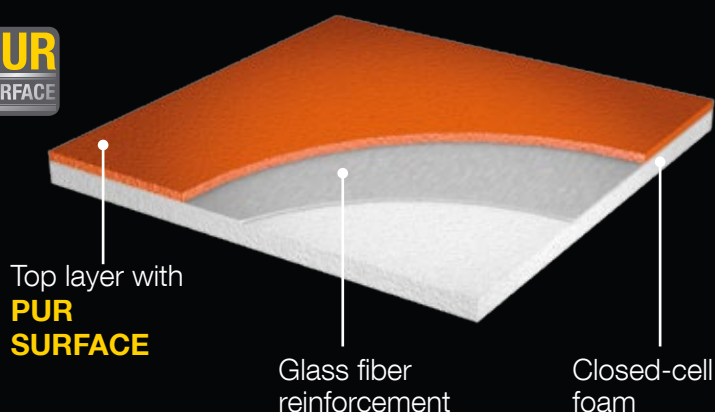
○ -good ● -recommended ● -best solution

BENEFITS

- Coefficient of friction between 0,4-0,7
‣ *Optimal balance of grip and slide*
- Easy to clean without periodical polishing
‣ *Less energy consumption, less maintenance cost*
- Optimal specular gloss
- Solvent and heavy metal free products
- **100 % recyclable**
- Contains pre-consumer recycled materials
- Light weight and flexibility; Available in rolls
‣ *Easy and quick installation*
- 2 m wide rolls ‣ *Less welding and joints*



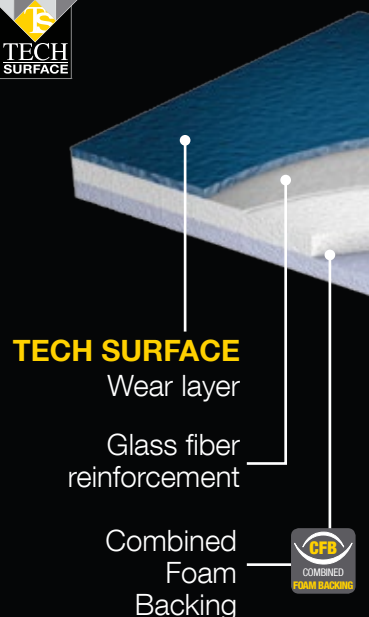
GRABOFLEX GYMFIT 60



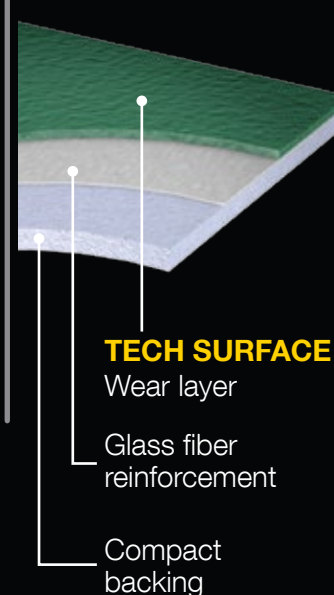
6,0
mm

7 years
guarantee

GRABOSPORT PRIMA



GRABO STAMINA



Prima
4,5
mm

Stamina
2,0
mm

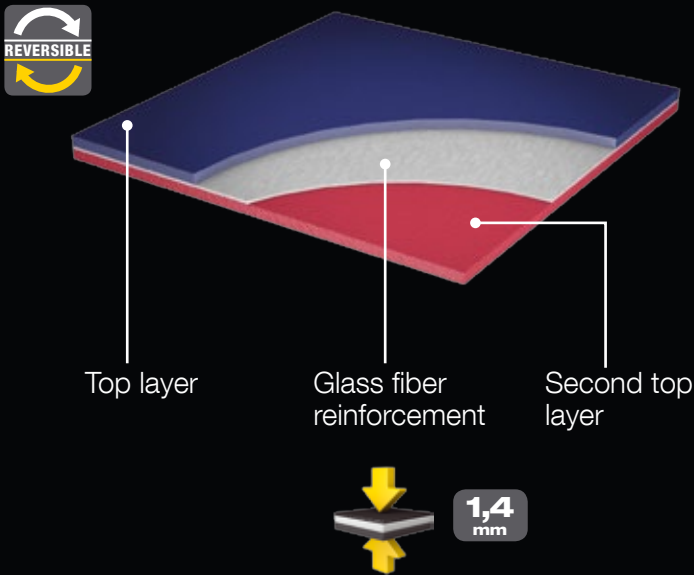
10 years
guarantee

Floor coverings for DANCE HALLS

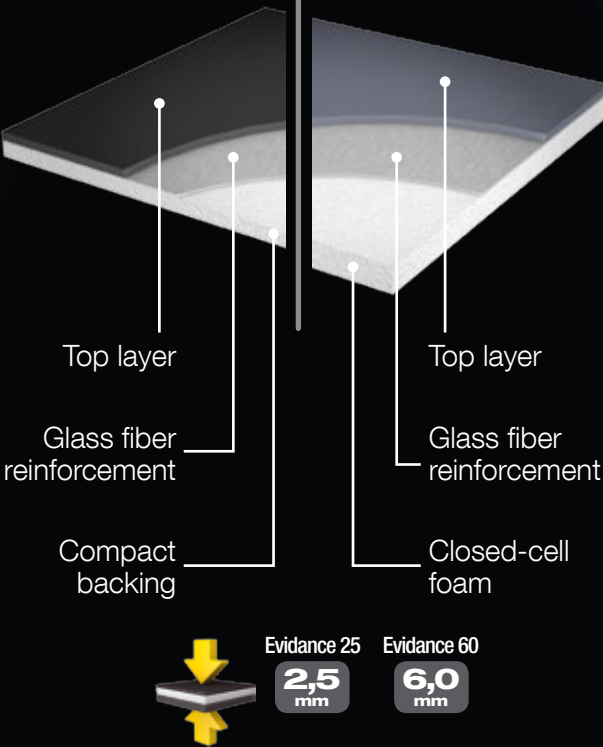
OUR RECOMMENDATION

DANCE TYPE	DUETT	EVIDENCE 25	EVIDENCE 60	STAMINA
Ballet	●	○		○
Hip-hop / jazz	●	●	●	○
Contemporary	●	●	●	○
Social		●		●
Multidance		●		
○ -good ● -recommended ● -best solution				

DUETT



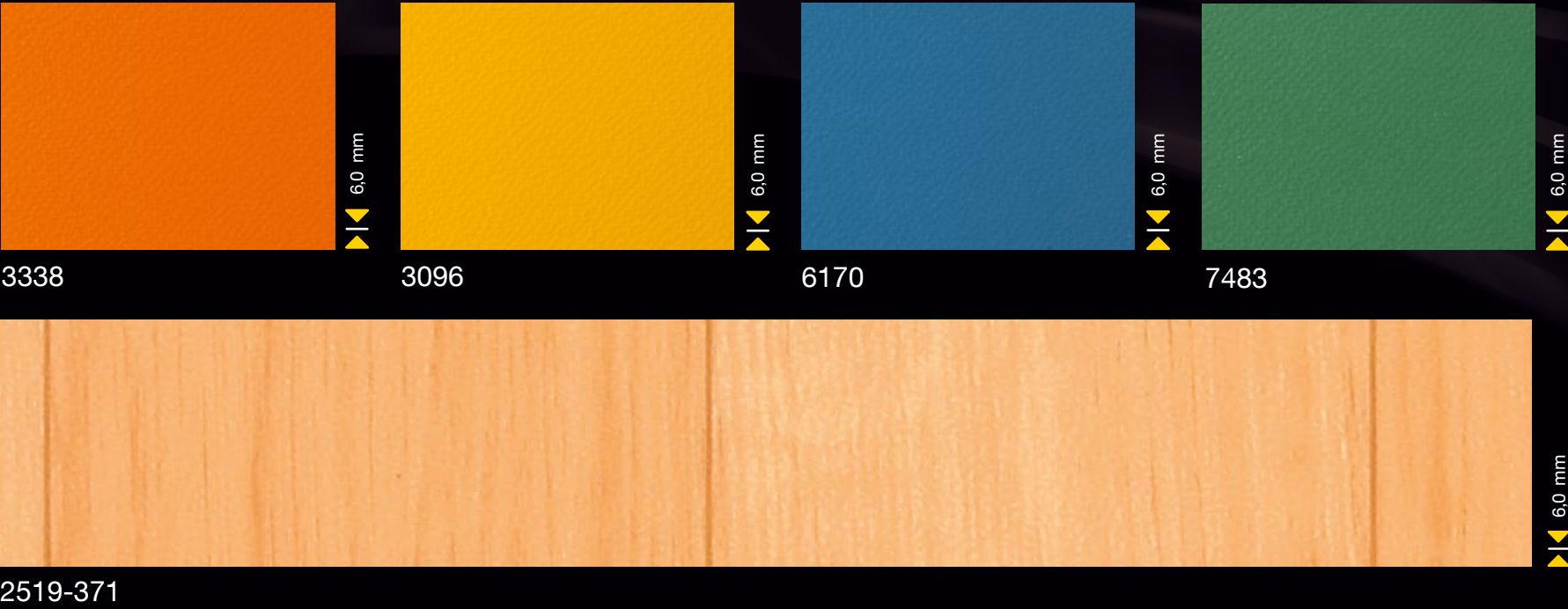
EVIDENCE 25 EVIDENCE 60



BENEFITS

- Solution *for several type of dances*
- Double sided ballet floor
- Can be used permanently, or without gluing, temporarily
- Its glass fibre reinforcement provides *excellent dimensional stability*
- One can rolled-in and rolled-out many time without any damages
- **100 % recyclable**
- Light weight and flexibility - *Easy to handle*

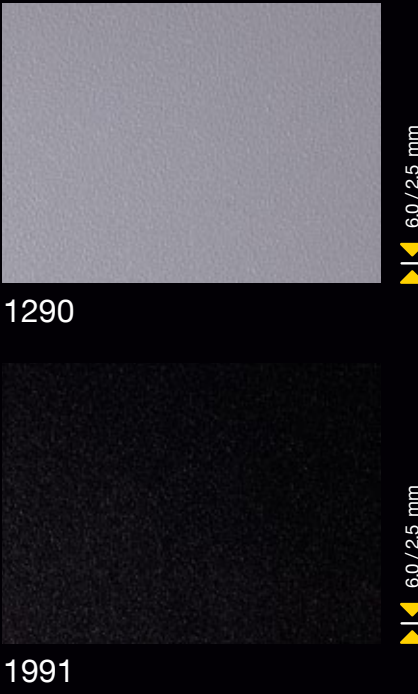
Colours of GYMFIT 60



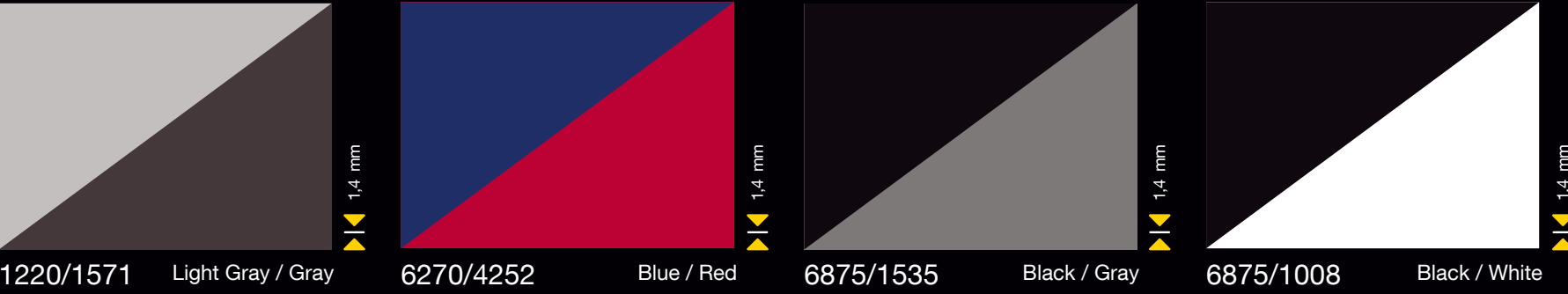
Colours of PRIMA & STAMINA



Colours of EVIDENCE



Colours of DUETT





Sports floors for EDUCATION

OUR RECOMMENDATION

EDUCATION	MEGA	EXTREME	SUPREME	ELITE	PRIMA	GYMFIT 60	GYMFIT 50	START
Universities	●	●	●	●				
School gyms	●	●	●	●	●	●	●	●
Kindergartens	●	●	●	●	●	●	●	●

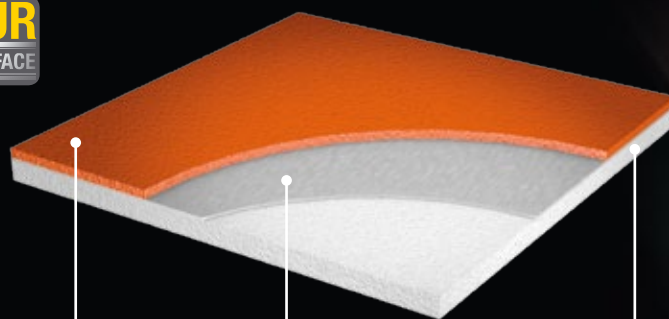
○ -good ● -recommended ● -best solution

BENEFITS

- Coefficient of friction between 0,4-0,7
‣ **Easy direction change**
- No periodical polishing required
‣ *Less energy consumption, less maintenance cost*
- Optimal specular gloss
- Solvent, heavy metal and phthalate free formulation; Low VOC
‣ **Environmentally sound solution**
- **100 % recyclable**
- Contains pre-consumer recycled materials
- Light weight and flexibility; Available in rolls
‣ **Easy and quick installation**
- 2 m wide rolls ‣ **Less welding and joints**



GRABOFLEX GYMFIT 50



Top layer with
PUR SURFACE

Glass fiber
reinforcement

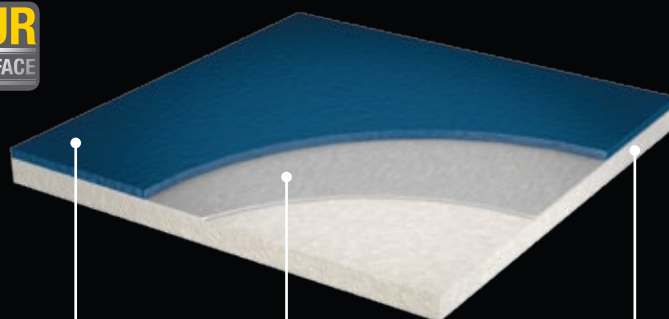
Closed-cell
foam



5,0
mm

7 years
guarantee

GRABOFLEX START



Top layer with
PUR SURFACE

Glass fiber
reinforcement

Closed-cell
foam

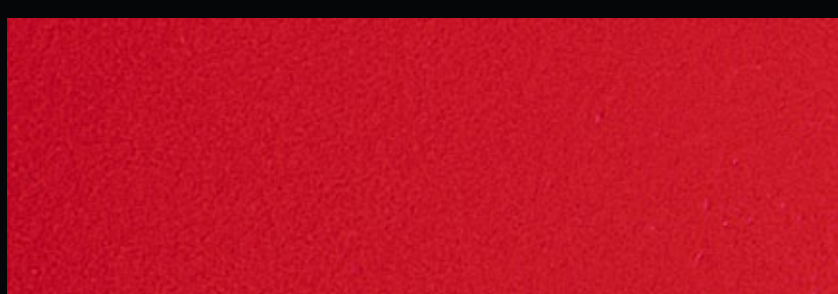


4,0
mm

7 years
guarantee

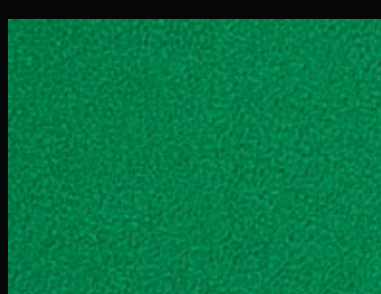


Colours of GYMFIT 50



4000-647

5,0 mm



4000-675

5,0 mm



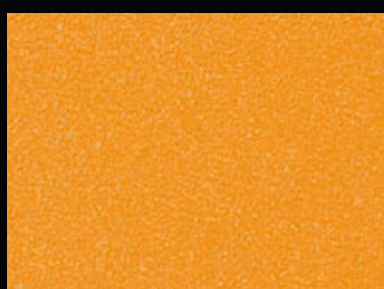
4000-635

5,0 mm



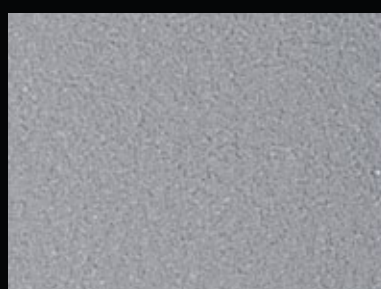
4000-661

5,0 mm



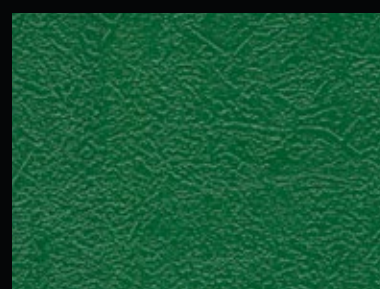
4000-630

5,0 mm



4000-616

5,0 mm



4000-677

5,0 mm



4231-674

5,0 mm



4217-671

5,0 mm

Colours of START



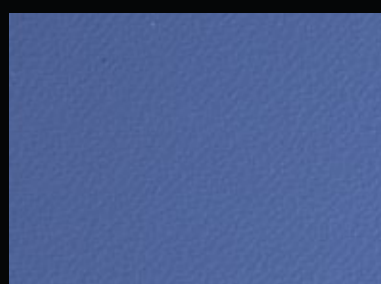
4181-651

4,0 mm



4000-665

4,0 mm



4000-659

4,0 mm



4000-660

4,0 mm

OUR RECOMMENDATION

	EXTREME	SUPREME	ELITE	ROCKET	GYMFIT 50	START
Badminton	●	●	●	●	●	●
Table tennis				●	●	●

○ -good ● -recommended ● -best solution

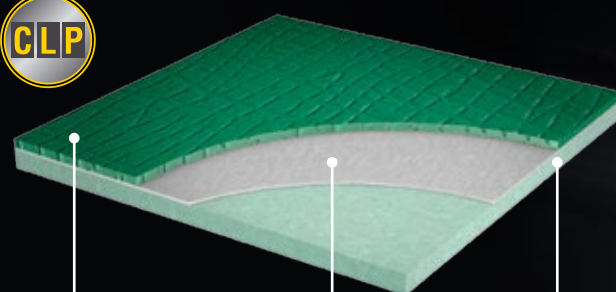
BENEFITS

- Coefficient of friction between 0,4-0,7
› **Quick and easy direction change**
- Light weight (Rocket, Start);
› Easy to roll in and out
› **Suitable to use temporarily**
- Optimal specular gloss
- Solvent, heavy metal and phthalat free formulation; Low VOC
› **Environmentally sound solution**
- **100 % recyclable**
- Contains pre-consumer recycled materials



GRABO

ROCKET



CLP Top layer

Glass fiber reinforcement

Closed-cell foam



3,8 mm

7 years guarantee

Colours of ROCKET



4387

3,8 mm



7533

3,8 mm

ACCESSORIES

GRABO WELD



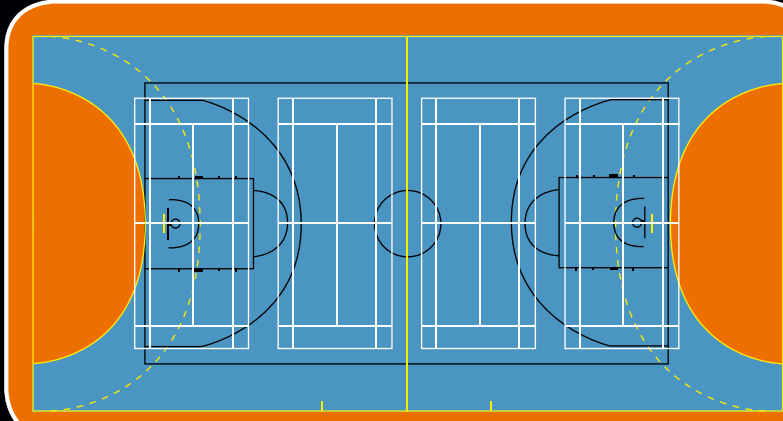
Welding rod, matching to grabo sports flooring designs, guarantees impermeable joints by hot welding.

Diameter	4,5 mm
Roll length	100 m

GRABO COLOR

Paints for marking sports ground lines.

Required quantity: 1l for 100 m long and 5 cm wide line.



Flooring	Recommended welding rod	
2000		2000
2519 / 4217-671		2066
2561		2561
2209		2219
4000-630		3086
3096		3096
3338		3338
4000-665		3573
4000-635		3553
4000-647		4725
4289		4289
4387		4387
1360		1360
4000-616		6322
1171-371		1246
1286		1286
7483		7483
2089		2243
4181-651		2216
3151		3151
2181-371		2181
6115		6115
6170 / 4000-659		6170
4000-661		6161
6470		6470
7143		7143
7533 / 4000-675		7533
4000-660		7507
7539		7539
4000-677		7577

Type of the Court	Length of the Marking Line (m)	Color of Paint
Badminton	110	white
Basketball	210	black / dark blue
Floorball	60	white
Handball	230	yellow
Indoor football	210	yellow
Indoor hockey	180	white / light blue / yellow
Netball	150	red
Tennis	150	white / red / yellow
Volleyball	80	green / white

SPECIALITIES

GRABO VAPOREX



Damp proof membrane for protection against moisture and for quicker installation.

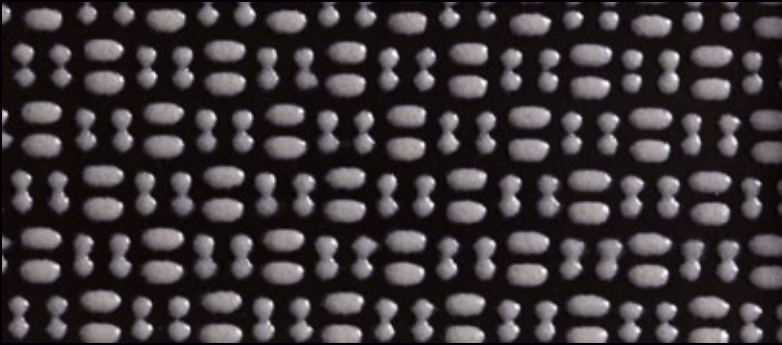
TECHNICAL DATA	VAPOREX T	VAPOREX 40	VAPOREX
Width EN426	200 cm	145 cm	145 cm
Standard roll length EN426	35 m±10%	25 m±10%	25 m±10% 45 m±10%
Thickness EN428	1,3 mm	4,0 mm	1,4 mm



4250-991 Vaporex T



1991-S-01/1 Vaporex 40



1991-S-03/1 Vaporex

GRABO PROTECTSPORT



Protects the sport flooring during non-sportive events. Easy to roll up and down.

TECHNICAL DATA	PROTECTSPORT	PROTECTSPORT T
Width EN426	140 cm	200 cm
Standard roll length EN426	25 m±10%	35 m±10%
Thickness EN428	1,5 mm	1,0 mm



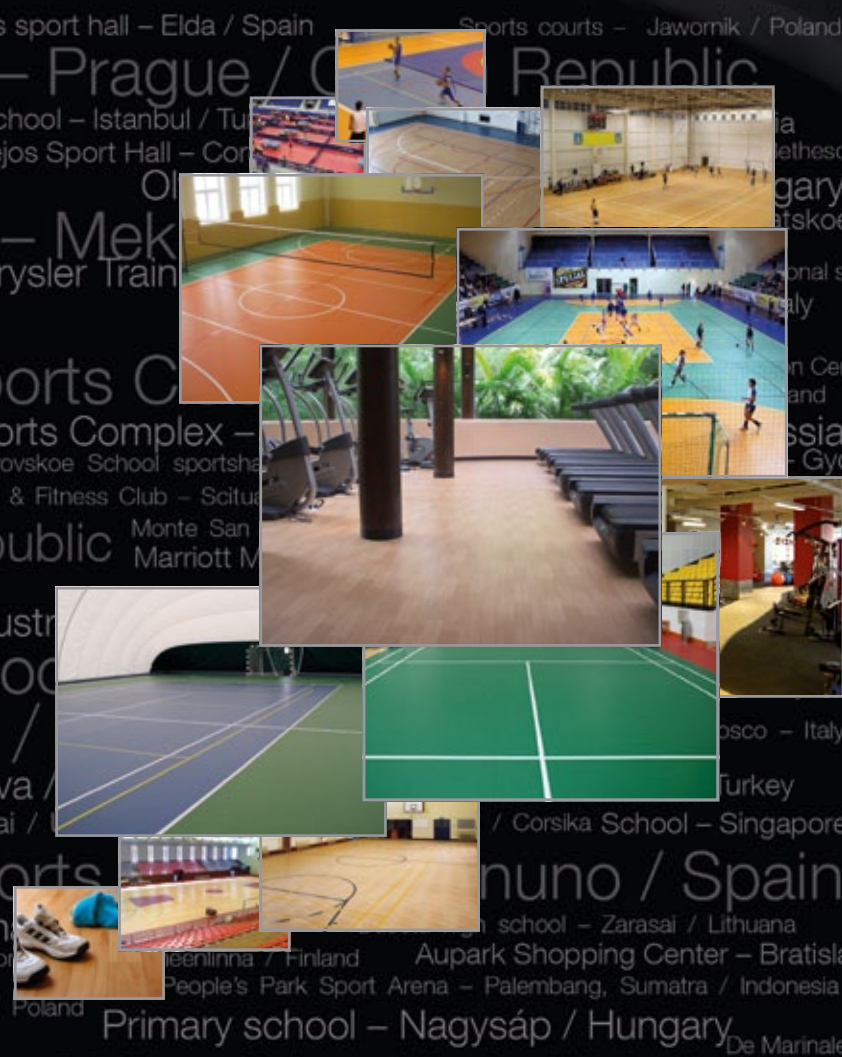
7522 ProtectSport



1784 ProtectSport

5000-510

ProtectSport T





MAGYAR OLIMPIAI
BIZOTTSÁG
HUNGARIAN OLYMPIC
COMMITTEE



**MAGYAR KÉZILABDA
SZÖVETSEG**

**HUNGARIAN
HANDBALL
FEDERATION**



MAGYAR
KOSÁRLABDÁZÓK
ORSZÁGOS SZÖVETSÉGE

HUNGARIAN
BASKETBALL
FEDERATION



MAGYAR RÖPLABDA
SZÖVETSÉG
HUNGARIAN
VOLLEYBALL
FEDERATION

APPLICATION

Multisport halls *

- competition level

- universities / colleges

- schools

Aerobic / Yoga / Dance

Badminton

Ballett / Dance

Billiards / Snooker

Body building

Cardio training

Fencing

Floorball

Gymnastics

Indoor hockey

Kindergarten

Locker room

Martial arts

Squash

Table tennis

Tennis

Wheelchair sports

[illegible]

* e.g. Handball, Basketball, Volleyball, Futsal, Netball etc.

○ - good ● - recommended ⊙ - best solution

TECHNICAL DATA

GRABOSPORT MEGA	GRABOSPORT EXTREME	GRABOSPORT SUPREME	GRABOSPORT ELITE	GRABOSPORT PRIMA	GRABO ROCKET	GRABOFLEX GYMFIT 60	GRABOFLEX GYMFIT 50	GRABOFLEX START	GRABO STAMINA
--------------------	-----------------------	-----------------------	---------------------	---------------------	-----------------	------------------------	------------------------	--------------------	------------------

DESCRIPTION

Thickness	mm	EN 428	10,0	8,0	6,7	6,0	4,5	3,8	6,0	5,0	4,0	2,0
Weight	kg/m ²	EN 430	5,3	4,2	3,8	3,7	2,8	2,5	3,5	2,9	2,7	2,8
Width	m	EN 426	2	2	2	2	2	2	2	2	2	2
Standard roll length	fm	EN 426	13	15	15	15	20	16; 20	15	20	20	20
Maximal roll length	fm	EN 426	15	21	23	25	25	30	25	25	25	25

CLASSIFICATION

Product specification			EN 14904	EN 14904	EN 14904	EN 14904	EN 651	EN 651	EN 651	EN 651	EN 651	EN 649
Impact sound insulation	ΔLw (dB)	EN ISO 717-2 EN ISO 140-8	21	21	22	21	21			16		
Thermal resistance	m2K/W		0,10	0,08	0,07	0,06	0,04	0,03	0,05	0,04	0,03	0,01
Flammability		NF P 92-512	M3	M3	M3	M3	Cfl - S1		M3	M3	Cfl - S1	Cfl - S1
		EN 13501-1	Cfl - S1	Cfl - S1	Cfl - S1	Cfl - S1			Cfl - S1	Cfl - S1		
		ÖNORM B3810/B3800/2	B1 - Q1	B1 - Q1	B1 - Q1	B1 - Q1			B1 - Q1	B1 - Q1		
		ISO 3795	100	100	100	100			100	100		100

SPORT PROPERTIES

Rotational friction		EN13036-4 PrEN 14903	80-110 0,4-0,6	80-110 0,4-0,6	80-110 0,4-0,6	80-110 0,4-0,6	80-110	80-110	80-110 0,4-0,6	80-110	80-110	0,4-0,6
Shock absorption	%	DIN 18032	41	34	31	30	22		21	17	12	
Shock absorption	%	EN 14808	38	31	28	27	19		18	14	9	
Vertical deformation	mm	EN 14809	1,5	1,1	1,08	0,96	0,7			0,33	0,4	
Ball rebound	%	EN 12235	97	100	98	99	98	> 90	98	100	100	> 90
Specular gloss		EN 2813	≤ 30	≤ 30	≤ 30	≤ 30	≤ 30	≤ 30	≤ 30	≤ 30	≤ 30	≤ 30

TECHNICAL CHARACTERISTIC

Dimensional stability	max	EN 434	+/- 0,2%	+/- 0,2%	+/- 0,2%	+/- 0,2%	+/- 0,2%	+/- 0,2%	+/- 0,2%	+/- 0,2%	+/- 0,2%	+/- 0,2%
Indentation resistance	mm	EN 1516	<0,5	<0,5	<0,5	<0,5	<0,5	<0,5	<0,5	<0,5	<0,5	<0,5
Resistance to a rolling load	1500 N	EN 1569	1500	1500	1500	1500	1500			1500		1500
Colour fastness		ISO 105 B02	6	6	6	6	6	6	6	6	6	6
Resistance to chemicals	benzine, 50% ethanol, 5% fatty alcohol sulfate, 5% acetic acid	EN 423	no change									
Abrasion resistance (H18 wheel)	≤ 1000 mg / 1000 cycles	EN ISO 5470-1	< 250	< 250	< 250	< 250	< 250	< 250	< 250	< 250	< 250	< 250
Abrasion group		EN 660-1	T	T	T	T	T	T	T	T	T	T